



# THE TOM KUNDIG COLLECTION

Olson Kundig



## CONTENTS

- 03** TK DOOR HARDWARE
- 19** TK CABINET HARDWARE
- 29** TK HOOKS
- 38** TK BATH
- 43** TK FIRE
- 49** TK FURNISHINGS
- 62** TK LIGHTING
- 67** TK WHEELS
- 70** FINISHES
- 71** CONTACT





**TK DOOR HARDWARE**



## BONGNORMOUS DOOR PULL

Welded tube door pull.

Fastened directly to the door panel,  
these pulls do not operate a latch.

Mounting backplate available.

### **SIZES:**

*2" OD x 24" H*

*1-3/8", 1-3/4" AND 2-1/4" DOOR THICKNESS*

### **AVAILABLE FINISHES:**

*BLACKENED STEEL*

*SATIN STAINLESS STEEL*

*SATIN BLACK POWDER COATING*

*GLOSS WHITE POWDER COATING*

*GLOSS RED POWDER COATING*

*OILED RUBBED BRONZE*





## BONGNORMOUS HIDE DOOR PULL

Welded tube door pull, with leather grip, stitched by hand.

Fastened directly to the door panel, these pulls do not operate a latch.

Mounting backplate available.

### SIZES:

*2" OD x 24" H*

*1-3/8", 1-3/4" AND 2-1/4" DOOR THICKNESS*

### AVAILABLE FINISHES:

*BLACKENED STEEL*

*SATIN STAINLESS STEEL*

*SATIN BLACK POWDER COATING*

*GLOSS WHITE POWDER COATING*

*GLOSS RED POWDER COATING*

*OILED RUBBED BRONZE*

### WITH:

*NATURAL LEATHER GRIP*

*BLACK LEATHER GRIP*



*In Photo: Blackened Steel with Natural Leather Grip*

## BONGNORMOUS RUBBER DOOR PULL

Welded tube door pull,  
with stacked neoprene rubber grip.

Fastened directly to the door panel,  
these pulls do not operate a latch.

Mounting backplate available.

### **SIZES:**

*2" OD x 24" H*

*1-3/8", 1-3/4" AND 2-1/4" DOOR THICKNESS*

### **AVAILABLE FINISHES:**

*BLACKENED STEEL*

*SATIN STAINLESS STEEL*

*SATIN BLACK POWDER COATING*

*GLOSS WHITE POWDER COATING*

*GLOSS RED POWDER COATING*

*OILED RUBBED BRONZE*

### **WITH:**

*NEOPRENE RUBBER GRIP*





## BONGNORMOUS WOOD DOOR PULL

Welded tube door pull,  
with wood grip.

Fastened directly to the door panel,  
these pulls do not operate a latch.

Mounting backplate available.

### SIZES:

*2" OD x 24" H*

*1-3/8", 1-3/4" AND 2-1/4" DOOR THICKNESS*

### AVAILABLE FINISHES:

*BLACKENED STEEL*

*SATIN STAINLESS STEEL*

*SATIN BLACK POWDER COATING*

*GLOSS WHITE POWDER COATING*

*GLOSS RED POWDER COATING*

*OILED RUBBED BRONZE*

### WITH:

*WALNUT WOOD GRIP*



*In Photo: Blackened Steel with Walnut Grip*

## TKNOBLER DEAD DOOR PULL

Designed for closet or pantry doors, these pulls are screwed to the door face, and do not operate a latch.

### SIZES:

2-3/8" OD x 3-1/4", 1-1/2" OD x 3-1/4", AND  
1-1/4" OD x 3-1/4" LENGTH

### AVAILABLE FINISHES:

BLACKENED STEEL

SATIN STAINLESS STEEL

SATIN BLACK POWDER COATING

GLOSS WHITE POWDER COATING

GLOSS RED POWDER COATING





## NO PEEK PRIVACY DOOR PULL

Folded and welded 1/8"  
sliding door pull, with privacy latch.

### SIZES:

*2" W x 12-7/8" H*

*1-3/4" or 2-1/4" DEPTH*

### AVAILABLE FINISHES:

*BLACKENED STEEL*

*SATIN STAINLESS STEEL*

*OILED RUBBED BRONZE*



## NO PEEK DOOR PULL

Folded and welded 1/8"  
sliding door pull.

### SIZES:

2" W x 10-1/4" H

1-3/8", 1-3/4" or 2-1/4" DEPTH

### AVAILABLE FINISHES:

BLACKENED STEEL

SATIN STAINLESS STEEL

OILED RUBBED BRONZE





## PEEK SLIDING DOOR PULL

Folded and welded 3/16" steel plate  
with a teardrop hemmed grip.

### SIZES:

1-1/2" W x 9" H

1-3/8", 1-3/4" or 2-1/4" DEPTH

*Bronze only available in 1/4" material*

### AVAILABLE FINISHES:

BLACKENED STEEL

SATIN STAINLESS STEEL

OILED RUBBED BRONZE



## PEEL XXL

Bent 5/16" plate door pull.

Optional 2-1/2" W x 24" H push plate  
for other side of door.

### SIZES:

2-1/2" W x 24" H

MIN 1-3/8" DOOR DEPTH

### AVAILABLE FINISHES:

BLACKENED STEEL

SATIN STAINLESS STEEL

OILED RUBBED BRONZE



## PUSH PULL PLATE

Brake formed 5/16" plate with a 7" teardrop hemmed grip.

### SIZES:

10" W x 44-1/2" H

### AVAILABLE FINISHES:

*BLACKENED STEEL*

*SATIN BLACK POWDER COATING*

*GLOSS RED POWDER COATING*

*GLOSS WHITE POWDER COATING*

*OIL RUBBED BRONZE*



## TK DOOR KNOCKER

Entry door knocker, fabricated with 2-3/8" diameter tube and backer plate.

### SIZES:

3-1/4" W x 9" H  
ONE SIZE

### AVAILABLE FINISHES:

BLACKENED STEEL  
SATIN STAINLESS STEEL  
SATIN BLACK POWDER COATING  
GLOSS RED POWDER COATING  
GLOSS WHITE POWDER COATING  
OIL RUBBED BRONZE





## TKNOBLER + PLATE ENTRY SET

Complete entry door set includes a pair of TKnobler door levers with 3/16" thick escutcheon plates, a TK thumb latch for the interior side of door, and cover plate for door edge.

Latch and lockbody not included.

### SIZES:

*2-3/8" W x 13-3/4" H*

*LEVER 2-3/8" OD, 1-1/2" OD, AND 1-1/4" OD  
X 3-1/4" L*

### AVAILABLE FINISHES:

*BLACKENED STEEL*

*SATIN STAINLESS STEEL*

*SATIN BLACK POWDER COATING*

*GLOSS WHITE POWDER COATING*

*GLOSS RED POWDER COATING*

*OIL RUBBED BRONZE*





## TKNOBLER + PLATE PASSAGE SET

Complete door set includes a pair of TKnobler door levers with 3/16" thick escutcheon plates, and cover plate for door edge.

Latch and lockbody not included.

### SIZES:

2-3/8" W x 13-3/4" H

LEVER 2-3/8" OD, 1-1/2" OD, AND 1-1/4" OD  
X 3-1/4" L

### AVAILABLE FINISHES:

BLACKENED STEEL

SATIN STAINLESS STEEL

SATIN BLACK POWDER COATING

GLOSS WHITE POWDER COATING

GLOSS RED POWDER COATING

OIL RUBBED BRONZE



## TKNOBLER + ROSE ENTRY SET

Complete entry door set includes a pair of TKnobler door levers with 3/16" thick rosettes plates, a TK thumb latch for the interior side of door, and cover plate for door edge.

Latch and lockbody not included.

### SIZES:

2-3/8" W x 13-3/4" H

LEVER 2-3/8" OD, 1-1/2" OD, AND 1-1/4" OD  
X 3-1/4" L

### AVAILABLE FINISHES:

BLACKENED STEEL

SATIN STAINLESS STEEL

SATIN BLACK POWDER COATING

GLOSS WHITE POWDER COATING

GLOSS RED POWDER COATING

OIL RUBBED BRONZE





## TKNOBLER + ROSE PASSAGE SET

Complete door set includes a pair of TKnobler door levers with 3/16" thick rosette plates, and cover plate for door edge.

Latch and lockbody not included.

### SIZES:

1-1/4" W x 13-3/4" H

LEVER 2-3/8" OD, 1-1/2" OD, AND 1-1/4" OD  
X 3-1/4 L

### AVAILABLE FINISHES:

BLACKENED STEEL

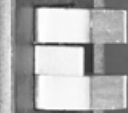
SATIN STAINLESS STEEL

SATIN BLACK POWDER COATING

GLOSS WHITE POWDER COATING

GLOSS RED POWDER COATING

OIL RUBBED BRONZE



A close-up photograph of a modern kitchen cabinet. The cabinet is dark-colored, possibly black or dark grey, with a smooth, matte finish. The hardware is minimalist, featuring long, thin, horizontal pulls that are slightly recessed into the cabinet doors. The lighting is dramatic, with strong highlights and deep shadows, emphasizing the clean lines and textures of the cabinetry. The background is a plain, light-colored wall.

**TK CABINET HARDWARE**



## CENTER ROLL CABINET PULL

Milled solid bar  
with bullnose profile.

### SIZES:

4", 6" AND 9" WIDTHS

### AVAILABLE FINISHES:

BLACKENED STEEL

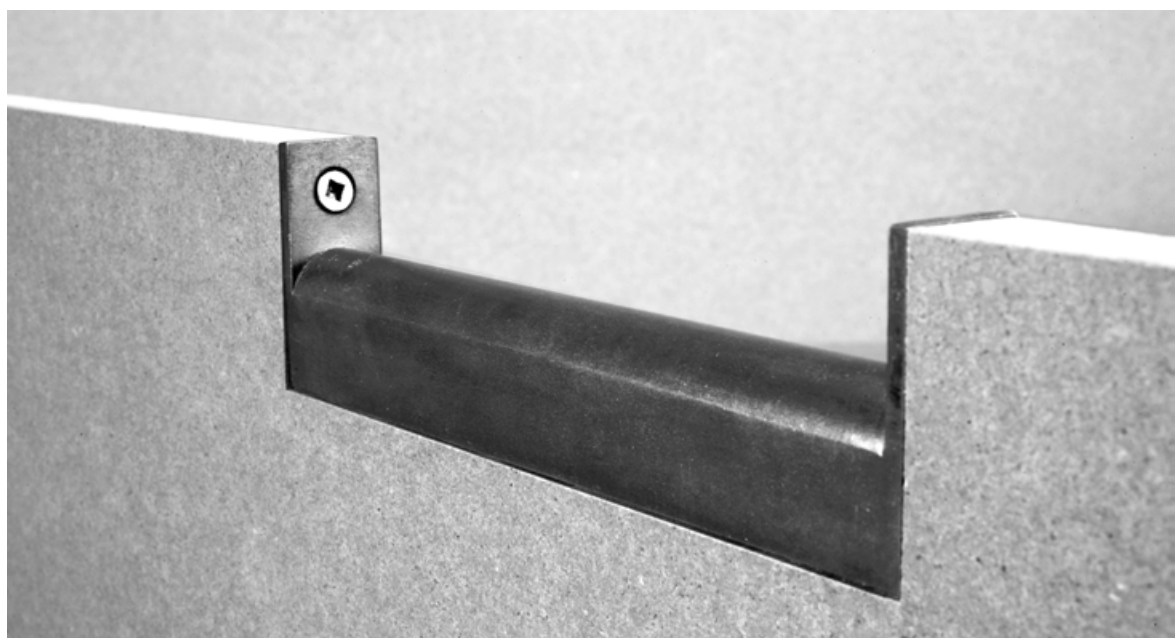
SATIN STAINLESS STEEL

SATIN BLACK POWDER COATING

GLOSS RED POWDER COATING

GLOSS WHITE POWDER COATING

OILED RUBBED BRONZE





## CORNER ROLL CABINET PULL

Milled solid bar  
with bullnose profile.

### SIZES:

4", 6" AND 9" WIDTHS

### AVAILABLE FINISHES:

BLACKENED STEEL

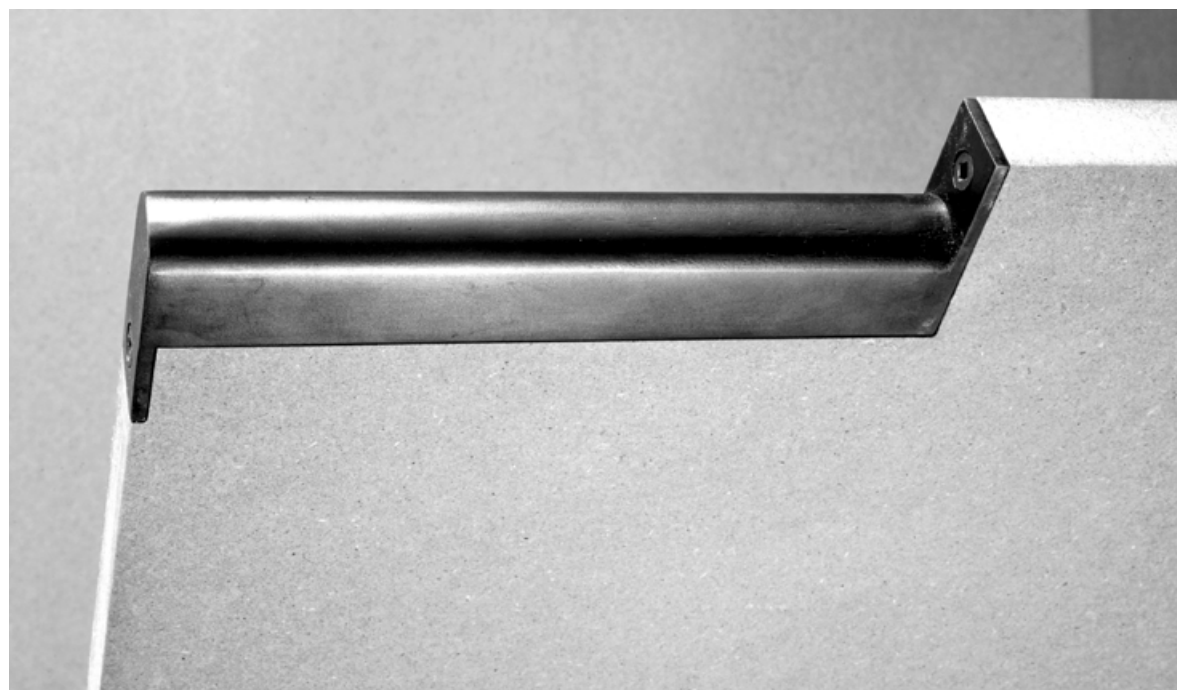
SATIN STAINLESS STEEL

SATIN BLACK POWDER COATING

GLOSS RED POWDER COATING

GLOSS WHITE POWDER COATING

OILED RUBBED BRONZE



## DROOP EAR CABINET PULL

Brake formed cabinet pull  
with hemmed grip.

### SIZES:

6.5", 9.5", AND 13.5" WIDTHS

### AVAILABLE FINISHES:

BLACKENED STEEL

SATIN STAINLESS STEEL

OILED RUBBED BRONZE





## DROOP EARLESS CABINET PULL

Brake formed cabinet pull  
with hemmed grip.

### SIZES:

2", 4", 6", AND 9" WIDTHS

### AVAILABLE FINISHES:

BLACKENED STEEL

SATIN STAINLESS STEEL

OILED RUBBED BRONZE



## EAR CABINET PULL

Brake formed cabinet pull  
with hemmed grip.

### SIZES:

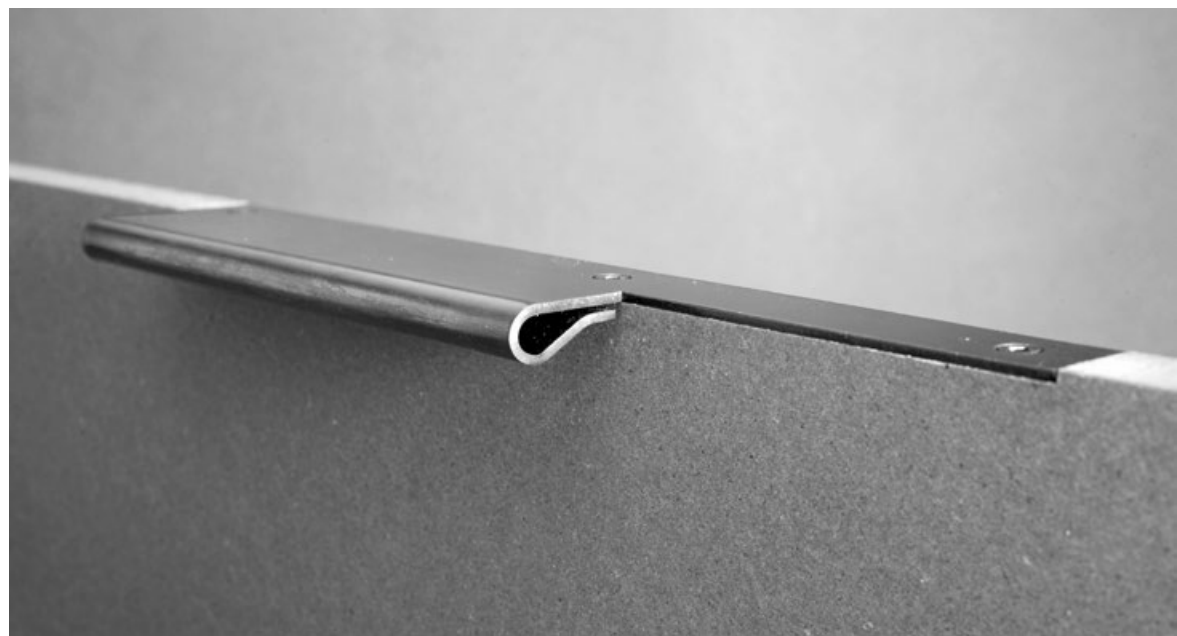
6.5", 9.5", AND 13.5" WIDTHS

### AVAILABLE FINISHES:

BLACKENED STEEL

SATIN STAINLESS STEEL

OILED RUBBED BRONZE



## EARLESS CABINET PULL

Brake formed cabinet pull  
with hemmed grip.

### SIZES:

2", 4", 6", AND 9" WIDTHS

### AVAILABLE FINISHES:

BLACKENED STEEL

SATIN STAINLESS STEEL

OILED RUBBED BRONZE





## FOLD CABINET PULL

Cabinet pull folded from a single piece of sheet metal, with hemmed grip.

### SIZES:

4", 6", AND 9" WIDTHS

### AVAILABLE FINISHES:

BLACKENED STEEL

SATIN STAINLESS STEEL

OILED RUBBED BRONZE



## PEEL CABINET PULL

Bent cabinet pull.

### SIZES:

1", 5", AND 9" HEIGHT

### AVAILABLE FINISHES:

BLACKENED STEEL

SATIN STAINLESS STEEL

OILED RUBBED BRONZE

SATIN BLACK POWDER COATING

GLOSS RED POWDER COATING

GLOSS WHITE POWDER COATING



## ESTY PULL

Tube handle with hardwood grip used as an appliance, door or cabinet solution.

### SIZES:

27", 42", AND 60" HEIGHT  
1" OD

### AVAILABLE FINISHES:

BLACKENED STEEL  
SATIN STAINLESS STEEL  
OILED RUBBED BRONZE

### WITH:

WALNUT GRIP  
OAK GRIP





**TK HOOKS**



## HALF PIPE HOOK

Single-sided sliced pipe hook.

**SIZES:**

*1-1/2" L x 1-1/2" W x 2-3/8" H*

**AVAILABLE FINISHES:**

*BLACKENED STEEL*

*SATIN STAINLESS STEEL*





## HALF PIPE DOUBLE HOOK

Two-sided sliced pipe hook.

**SIZES:**

*1-1/2" L x 4-1/2" W x 2-3/8" H*

**AVAILABLE FINISHES:**

*BLACKENED STEEL*

*SATIN STAINLESS STEEL*



## HOOK

Bent steel wall hook.

**SIZES:**

*1", 5", 9" HEIGHTS X 1" W*

**AVAILABLE FINISHES:**

*BLACKENED STEEL*

*SATIN STAINLESS STEEL*



## NOTCH HOOK

Steel tube double wall hook, notched and bent at both ends.

### SIZES:

2-1/2" L x 5" W x 1" H

### AVAILABLE FINISHES:

*BLACKENED STEEL*

*SATIN STAINLESS STEEL*





## SLIP HOOK

Tube bar with offset ring pinned to the front face.

### SIZES:

2" W x 1" OD

### AVAILABLE FINISHES:

*BLACKENED STEEL*

*SATIN STAINLESS STEEL*

*SATIN BLACK POWDER COATING*

*GLOSS WHITE POWDER COATING*

*GLOSS RED POWDER COATING*

*OILED RUBBED BRONZE*



## SLIP DOUBLE HOOK

Tube bar with offset rings  
pinned at both ends.

### SIZES:

2-1/2" L x 5" W x 1" OD

### AVAILABLE FINISHES:

*BLACKENED STEEL*

*SATIN STAINLESS STEEL*

*SATIN BLACK POWDER COATING*

*GLOSS WHITE POWDER COATING*

*GLOSS RED POWDER COATING*

*OILED RUBBED BRONZE*



## ROD DOUBLE HOOK

Hot forged solid round bar, bent to form top and bottom hooks.

### SIZES:

4" L x 1/2" W x 6-1/4" H

### AVAILABLE FINISHES:

*BLACKENED STEEL*

*SATIN STAINLESS STEEL*

*SATIN BLACK POWDER COAT*

*GLOSS RED POWDER COAT*

*GLOSS WHITE POWDER COAT*

*OILED RUBBED BRONZE*





## TUBE DOUBLE HOOK

Hot forged tube, flattened and bent to form top and bottom hooks.

### SIZES:

4" L x 1/2" W x 5-1/8" H

### AVAILABLE FINISHES:

*BLACKENED STEEL*

*SATIN STAINLESS STEEL*

*OILED RUBBED BRONZE*





**TK BATH**

## SLIP TOWEL BAR

Steel tube bar with offset rings pinned at both ends.

### SIZES:

18", 24" AND 32"

### AVAILABLE FINISHES:

*BLACKENED STEEL*

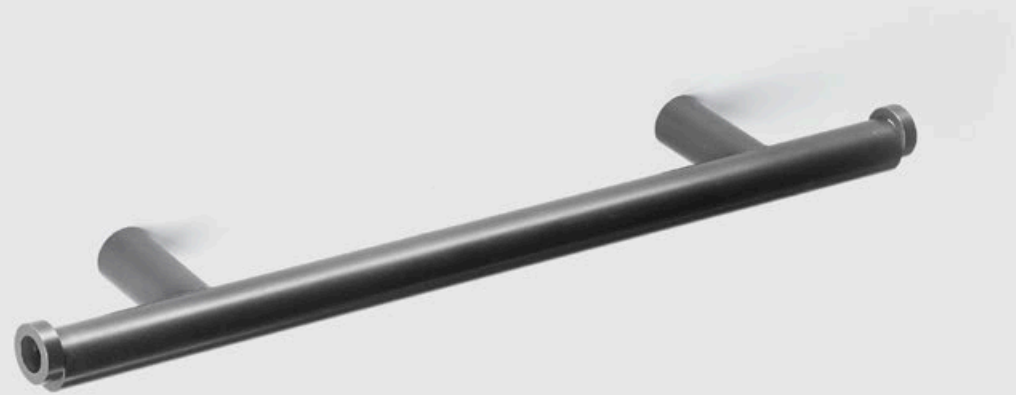
*SATIN STAINLESS STEEL*

*SATIN BLACK POWDER COATING*

*GLOSS WHITE POWDER COATING*

*GLOSS RED POWDER COATING*

*OILED RUBBED BRONZE*





## SLIP HOOK

Solid round bar with offset ring pinned to the front face.

### SIZES:

*2" D x 1" OD*

### AVAILABLE FINISHES:

*BLACKENED STEEL WITH  
LACQUERED FINISH*

*SATIN STAINLESS STEEL WITH  
LACQUERED FINISH*

*SATIN BLACK POWDER COATING*

*GLOSS WHITE POWDER COATING*

*GLOSS RED POWDER COATING*

*OILED RUBBED BRONZE WITH  
LACQUERED FINISH*



## SLIP DOUBLE HOOK

Tube with offset rings  
pinned at both ends.

### SIZES:

*2-1/2" D x 5" W x 1" OD*

### AVAILABLE FINISHES:

*BLACKENED STEEL WITH  
LACQUERED FINISH*

*SATIN STAINLESS STEEL WITH  
LACQUERED FINISH*

*SATIN BLACK POWDER COATING*

*GLOSS WHITE POWDER COATING*

*GLOSS RED POWDER COATING*

*OILED RUBBED BRONZE WITH  
LACQUERED FINISH*



## SLIP TP BAR

Welded 1" diameter tube, with an offset ring pinned to one end, keeping the TP roll in place.

### SIZES:

5-3/8" W x 3-5/8" D

### AVAILABLE FINISHES:

*BLACKENED STEEL*

*SATIN STAINLESS STEEL*

*SATIN BLACK POWDER COATING*

*GLOSS WHITE POWDER COATING*

*GLOSS RED POWDER COATING*

*OILED RUBBED BRONZE*





**TK FIRE**



## SHOVEL

For fire place ashes, with steel pipe and brake formed pan; includes peg for wall mounting.

### **SIZES:**

*ONE SIZE*

### **AVAILABLE FINISHES:**

*BLACKENED STEEL*

*SATIN STAINLESS STEEL*



## POKER

Solid round bar fireplace poker with steel pipe handle; includes steel peg for wall mounting.

### SIZES:

*ONE SIZE*

### AVAILABLE FINISHES:

*BLACKENED STEEL*

*SATIN STAINLESS STEEL*



## BROOM

Fireplace broom with steel pipe handle;  
includes steel peg for wall mounting.

**SIZES:**

*ONE SIZE*

**AVAILABLE FINISHES:**

*BLACKENED STEEL*

*SATIN STAINLESS STEEL*





## SHOVEL POKER + BROOM

Steel fireplace shovel, poker, and broom on a custom welded stand.

### SIZES:

*ONE SIZE, 32" H x 9-3/4"W x 5-1/2" D*

### AVAILABLE FINISHES:

*BLACKENED STEEL*

*SATIN STAINLESS STEEL*



## ANDIRONS

Fireplace andirons, with welded 3/4" steel tube grate and 2" diameter steel tube legs.

### SIZES:

33" W X 18-3/4" D X 17" H

### AVAILABLE FINISHES:

BLACKENED STEEL





**TK FURNISHINGS**



## COFFEE TABLE

A collection of steel tables and shelves, each with 180-degree hemmed edges, formed from heavy gauge hot-rolled plate on a 550 ton hydraulic press brake.

Tool marks serve as evidence of the fabrication process, and variations in surface texture and color are part of the intrinsic nature of the industrial materials.

### SIZES:

62"W X 33"D X 14"H

### AVAILABLE FINISHES:

*BLACKENED STEEL*





## SMALL COFFEE TABLE

A collection of steel tables and shelves, each with 180-degree hemmed edges, formed from heavy gauge hot-rolled plate on a 550 ton hydraulic press brake.

Tool marks serve as evidence of the fabrication process, and variations in surface texture and color are part of the intrinsic nature of the industrial materials.

### SIZES:

47"W X 23"D X 16"H

### AVAILABLE FINISHES:

*BLACKENED STEEL*





## CONSOLE TABLE

A collection of steel tables and shelves, each with 180-degree hemmed edges, formed from heavy gauge hot-rolled plate on a 550 ton hydraulic press brake.

Tool marks serve as evidence of the fabrication process, and variations in surface texture and color are part of the intrinsic nature of the industrial materials.

### SIZES:

108"W X 18"D X 27-3/4"H

### AVAILABLE FINISHES:

BLACKENED STEEL



## MEETING TABLE

A collection of steel tables and shelves, each with 180-degree hemmed edges, formed from heavy gauge hot-rolled plate on a 550 ton hydraulic press brake.

Tool marks serve as evidence of the fabrication process, and variations in surface texture and color are part of the intrinsic nature of the industrial materials.

### SIZES:

*3/8" PLATE, 144"W X 48"D X 30"H*

### AVAILABLE FINISHES:

*BLACKENED STEEL*





## LOW SHELVES

A collection of steel tables and shelves, each with 180-degree hemmed edges, formed from heavy gauge hot-rolled plate on a 550 ton hydraulic press brake.

Tool marks serve as evidence of the fabrication process, and variations in surface texture and color are part of the intrinsic nature of the industrial materials.

### SIZES:

54"W X 16-1/4"D X 24-1/4"H

### AVAILABLE FINISHES:

BLACKENED STEEL





## SIDE TABLE

A collection of steel tables and shelves, each with 180-degree hemmed edges, formed from heavy gauge hot-rolled plate on a 550 ton hydraulic press brake.

Tool marks serve as evidence of the fabrication process, and variations in surface texture and color are part of the intrinsic nature of the industrial materials.

### SIZES:

*22"W X 20"D X 20"H*

### AVAILABLE FINISHES:

*BLACKENED STEEL*



## BLACK DESK

Brake formed 3/8" steel writing desk, 62"W x 30"D x 30"H, with a blackened finish sealed with wax. The writing surface has a teardrop hemmed front edge, and is wrapped with 1/8" belting leather. The drawer is solid walnut, with undermount slides and a hemmed steel face. The desk can be ordered with the drawer on either the left or right hand side.

Tool marks serve as evidence of the fabrication process, and variations in surface texture and color are part of the intrinsic nature of the industrial materials.

### SIZES:

*ONE SIZE*

### AVAILABLE FINISHES:

*BLACKENED STEEL*



## JACK BOX

Hot-rolled 3/16" steel cabinet, 8 ft. wide, with an interior shelf and brake formed steel doors bent at 90 degrees. Handles and hinges machined from solid cold-rolled steel bar, with bronze hinge pins and bearings. Available in wall-mounted and floor-standing models.

Tool marks serve as evidence of the fabrication process, and variations in surface texture and color are part of the intrinsic nature of the industrial materials.

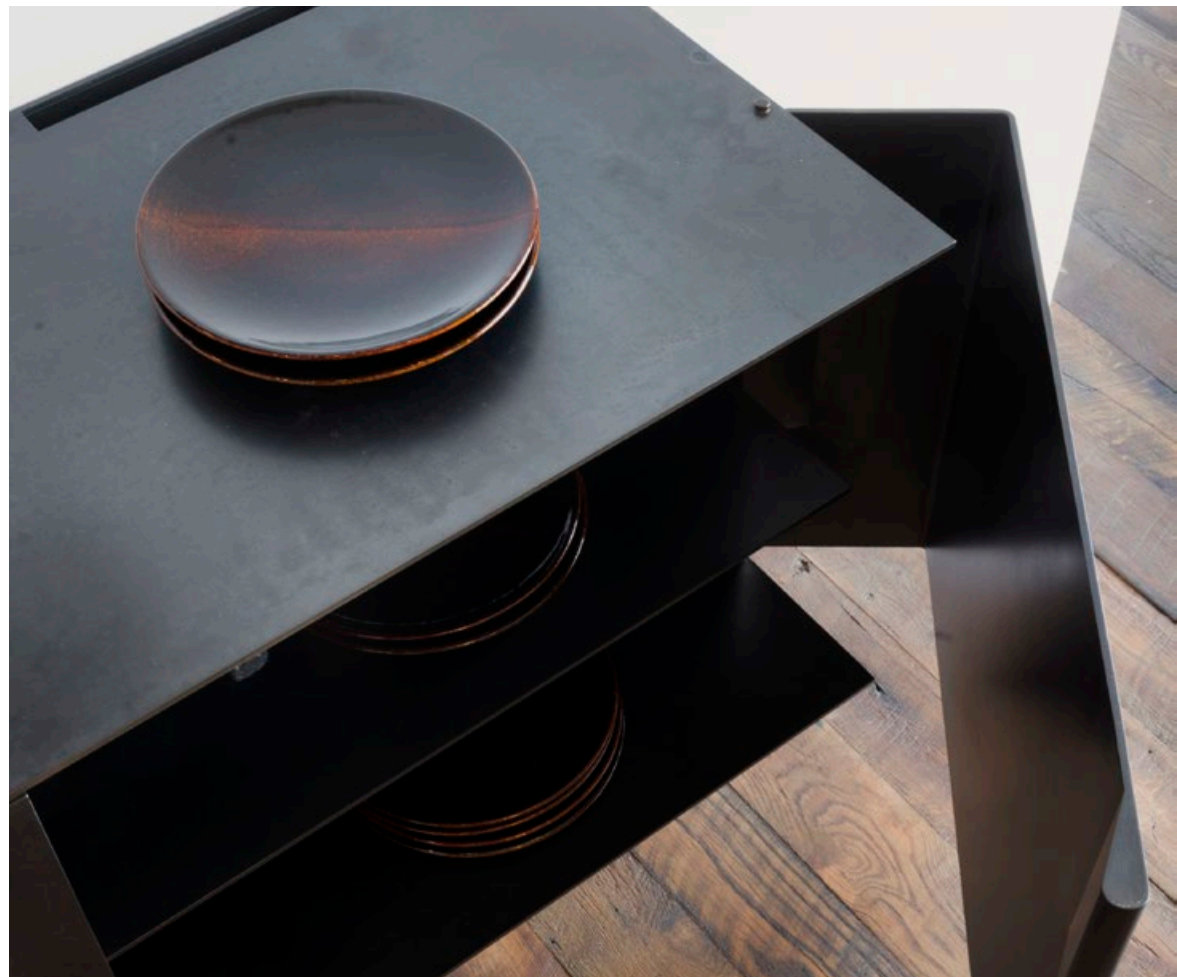
### SIZES:

*JACK BOX WALL: 96"W X 18"D X 18"H*

*JACK BOX FLOOR: 96"W X 18"D X 32"H*

### AVAILABLE FINISHES:

*BLACKENED STEEL*





## ROLL TABLE

Steel and wood rolling dining table with 2-3/4" thick solid walnut top. Two pairs of 5-5/8" diameter steel tube wheels turn on 1-1/4" diameter cold rolled axles with bronze bearings. Optional non-marring black rubber treads are 1/4" seamless cast urethane, 9" wide each.

Tool marks serve as evidence of the fabrication process, and variations in surface texture and color are part of the intrinsic nature of the industrial materials.

### SIZES:

60"W x 40"D x 29"H

### AVAILABLE FINISHES:

*BLACKENED STEEL*





## DISC BENCH

Steel and wood rolling bench with 2-3/4" thick solid walnut top. Four pairs of 9" diameter x 1-1/4" thick solid steel discs turn on cold rolled axles with bronze bearings. Optional non-marring black rubber treads are 1/4" seamless cast urethane, 1-1/4" wide each.

Tool marks serve as evidence of the fabrication process, and variations in surface texture and color are part of the intrinsic nature of the industrial materials.

### SIZES:

96"W x 16"D x 17"H

### AVAILABLE FINISHES:

*BLACKENED STEEL + WALNUT*



## TRAY

Plate tray, 5" wide, with folded handles at both ends.

Tool marks serve as evidence of the fabrication process, and variations in surface texture and color are part of the intrinsic nature of the industrial materials.

### SIZES:

24", 42" AND 54" LENGTHS

### AVAILABLE FINISHES:

*BLACKENED STEEL*

*SATIN STAINLESS STEEL*

*OILED RUBBED BRONZE*





## ROO

Hand-stitched leather pouch. Designed to mount on the Black Table series using concealed magnets.

Natural finish, will darken. Tool marks serve as evidence of the fabrication process, and variations in surface texture and color are part of the intrinsic nature of the industrial materials.

### SIZES:

10" W x 9" D

AVAILABLE IN CUSTOM SIZES

### AVAILABLE FINISHES:

NATURAL LEATHER







**TK LIGHTING**

## PERF PENDANT

Perforated steel tube light pendant.

Matching ceiling canopy and bulb included.

### SIZES:

*2-3/8" OD x 25" H*

### AVAILABLE FINISHES:

*BLACKENED STEEL*



## PERF PULLEY PENDANT

Adjustable height perforated steel tube light pendant, with lead-filled steel counterweight and pulley system.

### SIZES:

*2-3/8" OD x 25" H*

### AVAILABLE FINISHES:

*BLACKENED STEEL*





## PIPE PENDANT

Steel tube light pendant.

Matching ceiling canopy and bulb included.

### SIZES:

*2-3/8" OD x 25" H*

### AVAILABLE FINISHES:

*BLACKENED STEEL*



## PIPE PULLEY PENDANT

Adjustable height steel tube light pendant, with lead-filled steel counterweight and pulley system.

### SIZES:

*2-3/8" OD x 25" H*

### AVAILABLE FINISHES:

*BLACKENED STEEL*





**TK WHEELS**



## ROLL

Make your custom table or cabinet movable! Each set of casters is made with a pair of steel tube wheels, with cold rolled axles, solid aluminum hubs, and self-lubricating bronze bearings.

### SIZES:

*2-3/8" OD AND 5-5/8" OD*

### AVAILABLE FINISHES:

*BLACKENED STEEL*

*BLACKENED STEEL WITH RUBBER TREAD*



## DISC

Put your tabletop or cabinet on wheels!  
Each set of casters is made with a pair  
of machined steel plate discs, with  
self-lubricating bronze bearings and  
custom hub caps.

### SIZES:

*1/2" W X 5" OD AND 1-1/4" W X 9" OD*

### AVAILABLE FINISHES:

*BLACKENED STEEL*



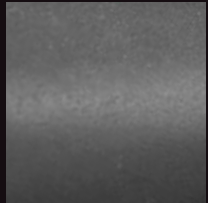
# FINISHES



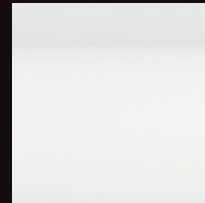
*BLACKENED STEEL*



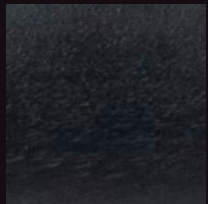
*GLOSS RED POWDER COATING*



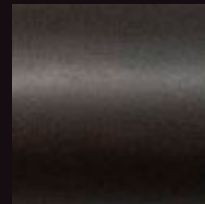
*SATIN STAINLESS STEEL*



*GLOSS WHITE POWDER COATING*



*SATIN BLACK POWDER COATING*



*OIL RUBBED BRONZE*

*Tool marks serve as evidence of the fabrication process, and variations in surface texture and color are part of the intrinsic nature of the industrial materials.*



FOR MORE INFORMATION, VISIT  
**[COLLECTION.OLSONKUNDIG.COM](http://COLLECTION.OLSONKUNDIG.COM)**

Olson Kundig