



TK COLLECTION

Olson Kundig



CONTENTS

- 03 TK DOOR HARDWARE
- 19 TK CABINET HARDWARE
- 29 TK HOOKS
- 38 TK BATH
- 43 TK FIRE
- 49 TK FURNISHINGS
- 62 TK LIGHTING
- 67 TK WHEELS
- 70 FINISHES
- 71 CONTACT AND ORDERS



TK DOOR HARDWARE

BONGNORMOUS DOOR PULL

Welded tube door pull.

Fastened directly to the door panel,
these pulls do not operate a latch.

Mounting backplate available.

SIZES:

2" OD x 24" H

1-3/8", 1-3/4" AND 2-1/4" DOOR THICKNESS

AVAILABLE FINISHES:

BLACKENED STEEL

SATIN STAINLESS STEEL

SATIN BLACK POWDER COATING

GLOSS WHITE POWDER COATING

GLOSS RED POWDER COATING

OILED RUBBED BRONZE



BONGNORMOUS HIDE DOOR PULL

Welded tube door pull, with leather grip, stitched by hand.

Fastened directly to the door panel, these pulls do not operate a latch.

Mounting backplate available.

SIZES:

2" OD x 24" H

1-3/8", 1-3/4" AND 2-1/4" DOOR THICKNESS

AVAILABLE FINISHES:

BLACKENED STEEL

SATIN STAINLESS STEEL

SATIN BLACK POWDER COATING

GLOSS WHITE POWDER COATING

GLOSS RED POWDER COATING

OILED RUBBED BRONZE

WITH:

NATURAL LEATHER GRIP

BLACK LEATHER GRIP



BONGNORMOUS RUBBER DOOR PULL

Welded tube door pull,
with stacked neoprene rubber grip.

Fastened directly to the door panel,
these pulls do not operate a latch.

Mounting backplate available.

SIZES:

2" OD x 24" H

1-3/8", 1-3/4" AND 2-1/4" DOOR THICKNESS

AVAILABLE FINISHES:

BLACKENED STEEL

SATIN STAINLESS STEEL

SATIN BLACK POWDER COATING

GLOSS WHITE POWDER COATING

GLOSS RED POWDER COATING

OILED RUBBED BRONZE

WITH:

NEOPRENE RUBBER GRIP



In Photo: Blackened Steel with Neoprene Rubber Grip

BONGNORMOUS WOOD DOOR PULL

Welded tube door pull,
with wood grip.

Fastened directly to the door panel,
these pulls do not operate a latch.

Mounting backplate available.

SIZES:

2" OD x 24" H

1-3/8", 1-3/4" AND 2-1/4" DOOR THICKNESS

AVAILABLE FINISHES:

BLACKENED STEEL

SATIN STAINLESS STEEL

SATIN BLACK POWDER COATING

GLOSS WHITE POWDER COATING

GLOSS RED POWDER COATING

OILED RUBBED BRONZE

WITH:

WALNUT WOOD GRIP



In Photo: Blackened Steel with Walnut Grip

TKNOBLER DEAD DOOR PULL

Designed for closet or pantry doors, these pulls are screwed to the door face, and do not operate a latch.

SIZES:

2-3/8" OD x 3-1/4", 1-1/2" OD x 3-1/4", AND
1-1/4" OD x 3-1/4" LENGTH

AVAILABLE FINISHES:

BLACKENED STEEL

SATIN STAINLESS STEEL

SATIN BLACK POWDER COATING

GLOSS WHITE POWDER COATING

GLOSS RED POWDER COATING



NO PEEK PRIVACY DOOR PULL

Folded and welded 1/8"
sliding door pull, with privacy latch.

SIZES:

2" W x 12-7/8" H

1-3/4" or 2-1/4" DEPTH

AVAILABLE FINISHES:

BLACKENED STEEL

SATIN STAINLESS STEEL

OILED RUBBED BRONZE



NO PEEK DOOR PULL

Folded and welded 1/8"
sliding door pull.

SIZES:

2" W x 10-1/4" H

1-3/8", 1-3/4" or 2-1/4" DEPTH

AVAILABLE FINISHES:

BLACKENED STEEL

SATIN STAINLESS STEEL

OILED RUBBED BRONZE



PEEK SLIDING DOOR PULL

Folded and welded 3/16" steel plate
with a teardrop hemmed grip.

SIZES:

1-1/2" W x 9" H

1-3/8", 1-3/4" or 2-1/4" DEPTH

Bronze only available in 1/4" material

AVAILABLE FINISHES:

BLACKENED STEEL

SATIN STAINLESS STEEL

OILED RUBBED BRONZE



PEEL XXL

Bent 5/16" plate door pull.

Optional 2-1/2" W x 24" H push plate
for other side of door.

SIZES:

2-1/2" W x 24" H

MIN 1-3/8" DOOR DEPTH

AVAILABLE FINISHES:

BLACKENED STEEL

SATIN STAINLESS STEEL

OILED RUBBED BRONZE



PUSH PULL PLATE

Brake formed 5/16" plate with
a 7" teardrop hemmed grip.

SIZES:

10" W x 44-1/2" H

AVAILABLE FINISHES:

BLACKENED STEEL

SATIN BLACK POWDER COATING

GLOSS RED POWDER COATING

GLOSS WHITE POWDER COATING

OIL RUBBED BRONZE



TK DOOR KNOCKER

Entry door knocker, fabricated with 2-3/8" diameter tube and backer plate.

SIZES:

3-1/4" W x 9" H

ONE SIZE

AVAILABLE FINISHES:

BLACKENED STEEL

SATIN STAINLESS STEEL

SATIN BLACK POWDER COATING

GLOSS RED POWDER COATING

GLOSS WHITE POWDER COATING

OIL RUBBED BRONZE



TKNOBLER + PLATE ENTRY SET

Complete entry door set includes a pair of TKnobler door levers with 3/16" thick escutcheon plates, a TK thumb latch for the interior side of door, and cover plate for door edge.

Latch and lockbody not included.

SIZES:

2-3/8" W x 13-3/4" H

*LEVER 2-3/8" OD, 1-1/2" OD, AND 1-1/4" OD
X 3-1/4" L*

AVAILABLE FINISHES:

BLACKENED STEEL

SATIN STAINLESS STEEL

SATIN BLACK POWDER COATING

GLOSS WHITE POWDER COATING

GLOSS RED POWDER COATING

OIL RUBBED BRONZE



TKNOBLER + PLATE PASSAGE SET

Complete door set includes a pair of TKnobler door levers with 3/16" thick escutcheon plates, and cover plate for door edge.

Latch and lockbody not included.

SIZES:

2-3/8" W x 13-3/4" H

LEVER 2-3/8" OD, 1-1/2" OD, AND 1-1/4" OD
X 3-1/4" L

AVAILABLE FINISHES:

BLACKENED STEEL

SATIN STAINLESS STEEL

SATIN BLACK POWDER COATING

GLOSS WHITE POWDER COATING

GLOSS RED POWDER COATING

OIL RUBBED BRONZE



TKNOBLER + ROSE ENTRY SET

Complete entry door set includes a pair of TKnobler door levers with 3/16" thick rosettes plates, a TK thumb latch for the interior side of door, and cover plate for door edge.

Latch and lockbody not included.

SIZES:

2-3/8" W x 13-3/4" H

LEVER 2-3/8" OD, 1-1/2" OD, AND 1-1/4" OD
X 3-1/4" L

AVAILABLE FINISHES:

BLACKENED STEEL

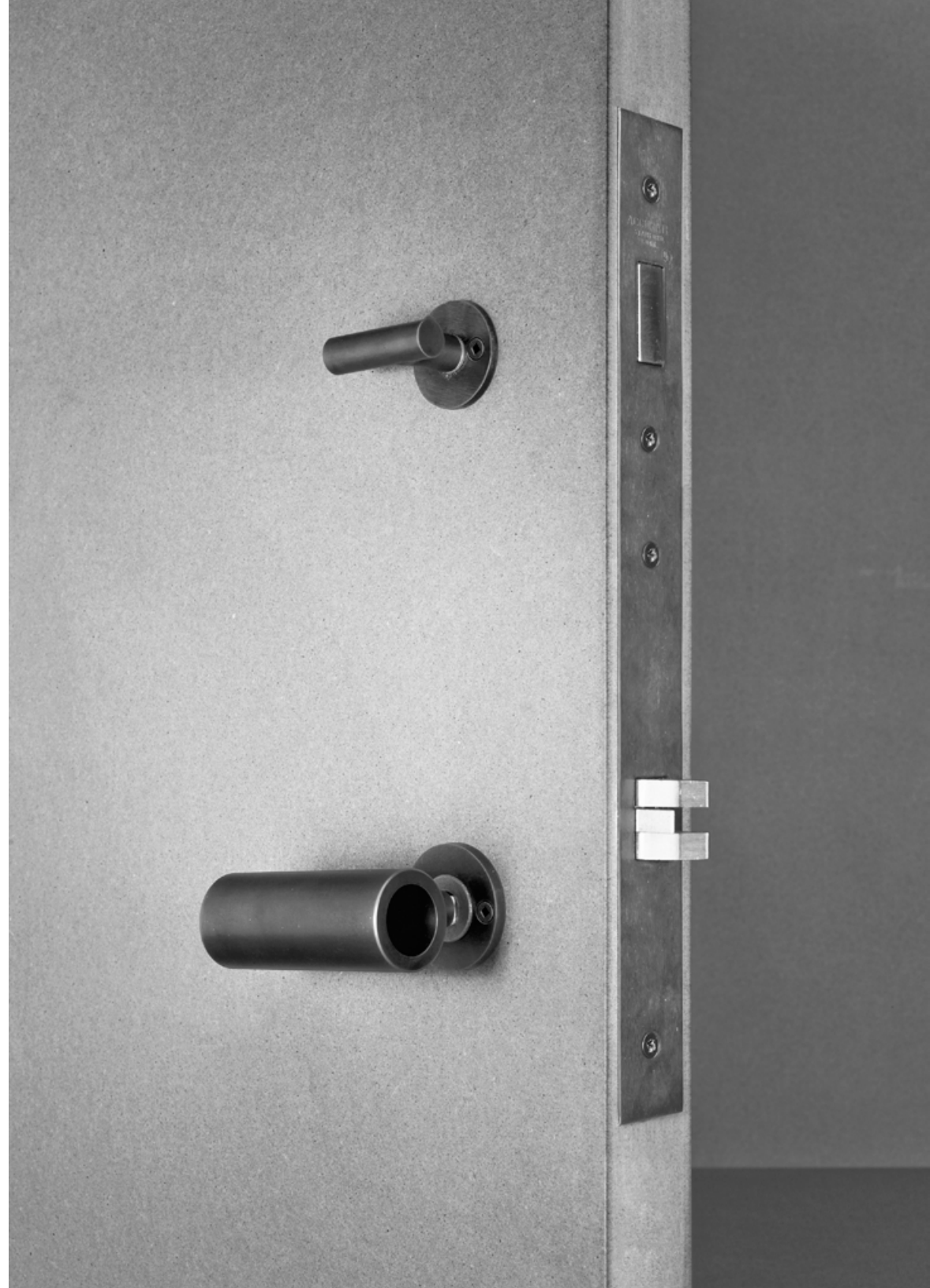
SATIN STAINLESS STEEL

SATIN BLACK POWDER COATING

GLOSS WHITE POWDER COATING

GLOSS RED POWDER COATING

OIL RUBBED BRONZE



TKNOBLER + ROSE PASSAGE SET

Complete door set includes a pair of TKnobler door levers with 3/16" thick rosette plates, and cover plate for door edge.

Latch and lockbody not included.

SIZES:

1-1/4" W x 13-3/4" H

LEVER 2-3/8" OD, 1-1/2" OD, AND 1-1/4" OD
X 3-1/4" L

AVAILABLE FINISHES:

BLACKENED STEEL

SATIN STAINLESS STEEL

SATIN BLACK POWDER COATING

GLOSS WHITE POWDER COATING

GLOSS RED POWDER COATING

OIL RUBBED BRONZE



A photograph of modern, dark-colored cabinetry. The image shows a close-up of the lower section, featuring a dark countertop and cabinets below it. Two sleek, horizontal, metallic handles are visible on the cabinet doors. Above the countertop, there are more cabinets, some of which are partially visible. The lighting is soft, highlighting the textures and lines of the cabinetry.

TK CABINET HARDWARE

CENTER ROLL CABINET PULL

Milled solid bar
with bullnose profile.

SIZES:

4", 6" AND 9" WIDTHS

AVAILABLE FINISHES:

BLACKENED STEEL

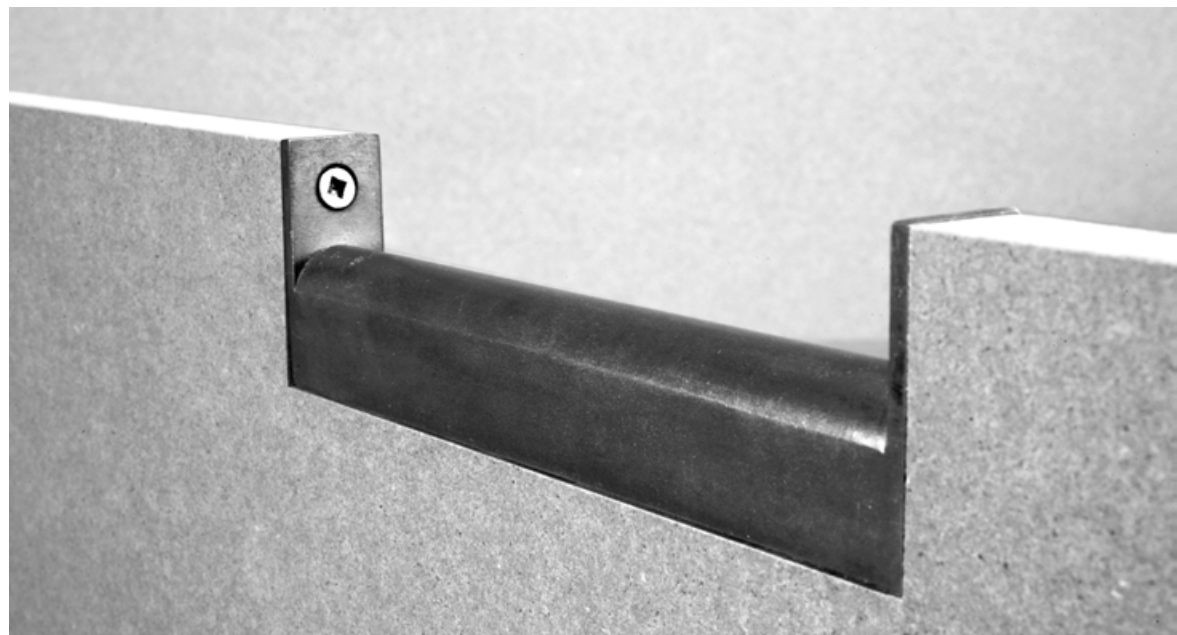
SATIN STAINLESS STEEL

SATIN BLACK POWDER COATING

GLOSS RED POWDER COATING

GLOSS WHITE POWDER COATING

OILED RUBBED BRONZE



CORNER ROLL CABINET PULL

Milled solid bar
with bullnose profile.

SIZES:

4", 6" AND 9" WIDTHS

AVAILABLE FINISHES:

BLACKENED STEEL

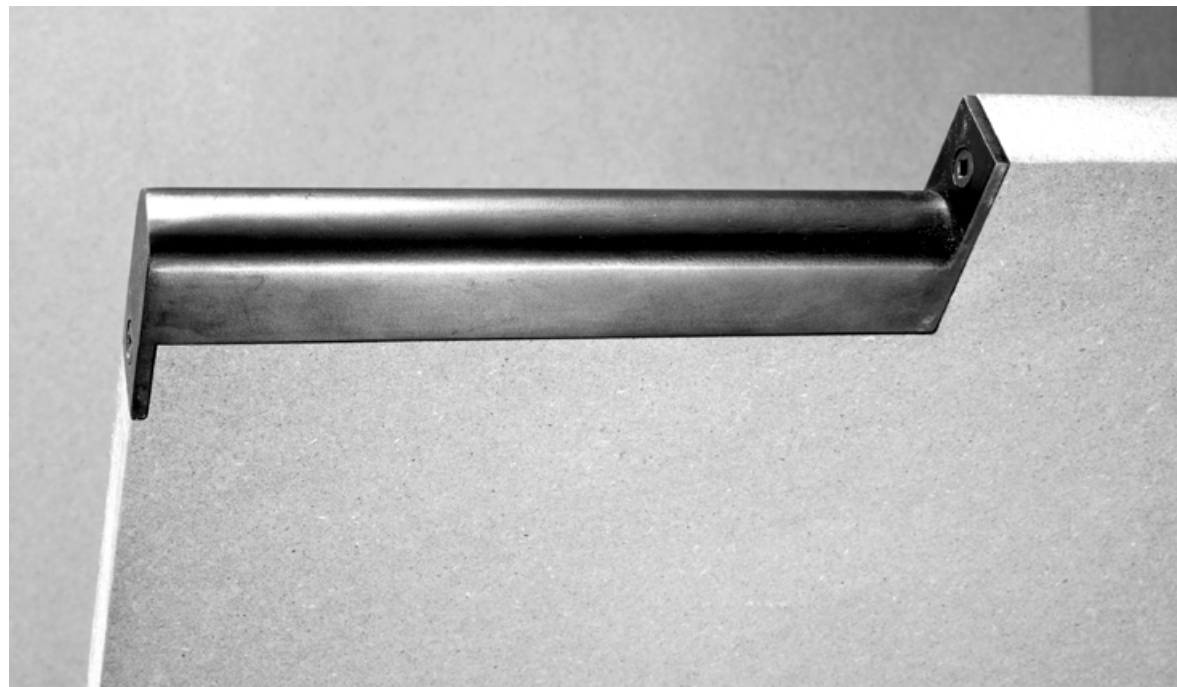
SATIN STAINLESS STEEL

SATIN BLACK POWDER COATING

GLOSS RED POWDER COATING

GLOSS WHITE POWDER COATING

OILED RUBBED BRONZE



DROOP EAR CABINET PULL

Brake formed cabinet pull
with hemmed grip.

SIZES:

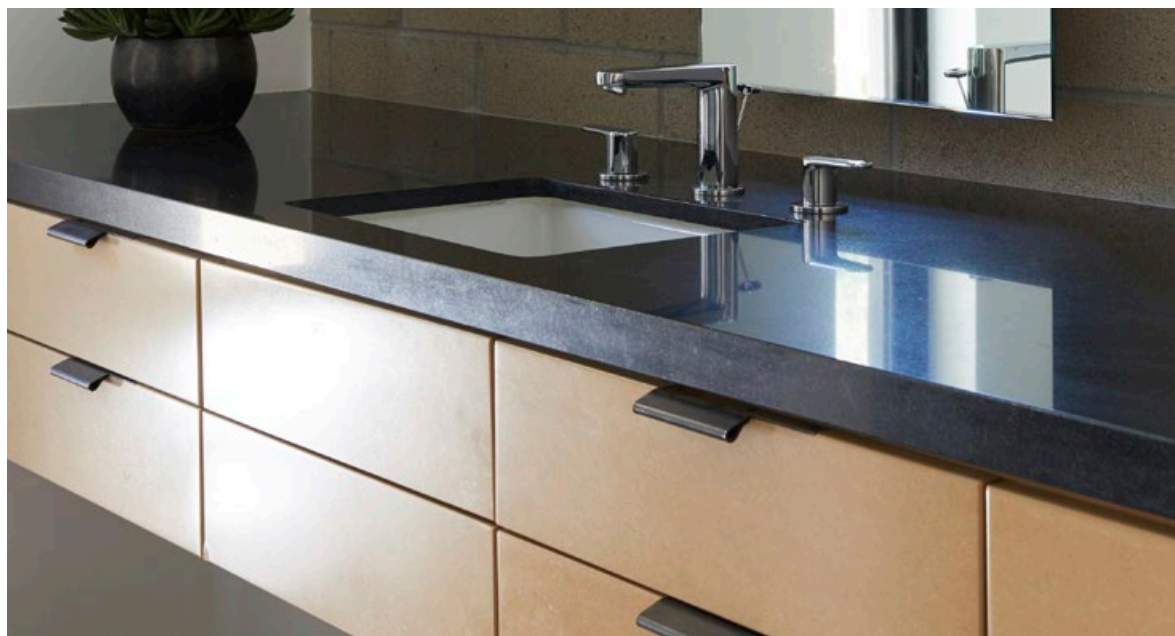
6.5", 9.5", AND 13.5" WIDTHS

AVAILABLE FINISHES:

BLACKENED STEEL

SATIN STAINLESS STEEL

OILED RUBBED BRONZE



DROOP EARLESS CABINET PULL

Brake formed cabinet pull
with hemmed grip.

SIZES:

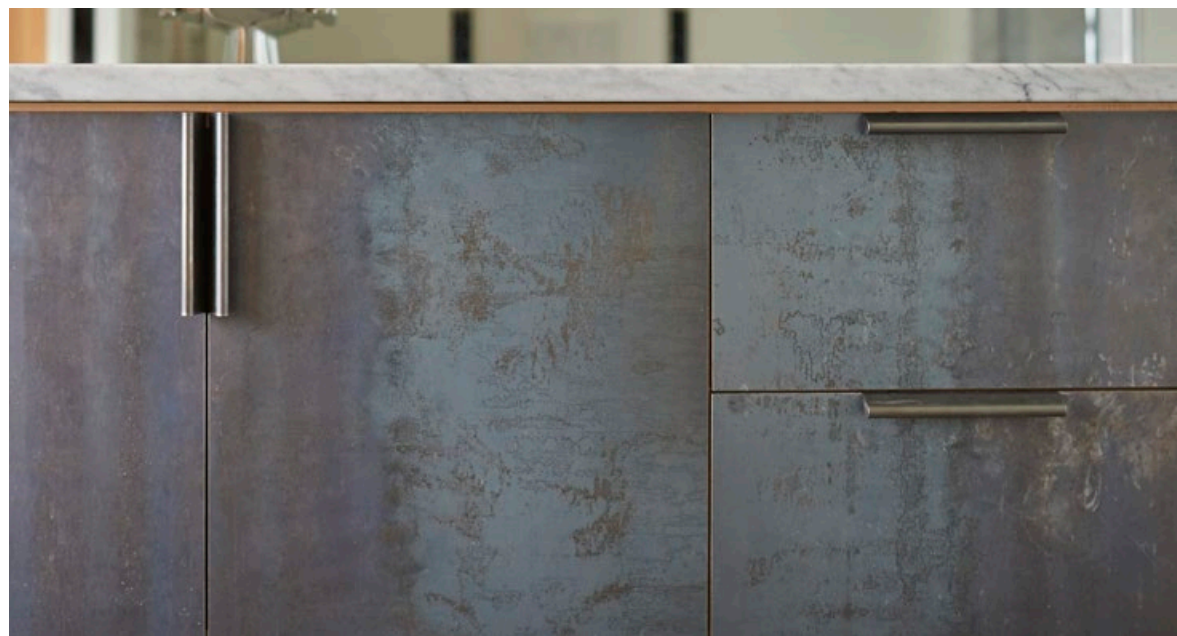
2", 4", 6", AND 9" WIDTHS

AVAILABLE FINISHES:

BLACKENED STEEL

SATIN STAINLESS STEEL

OILED RUBBED BRONZE



EAR CABINET PULL

Brake formed cabinet pull
with hemmed grip.

SIZES:

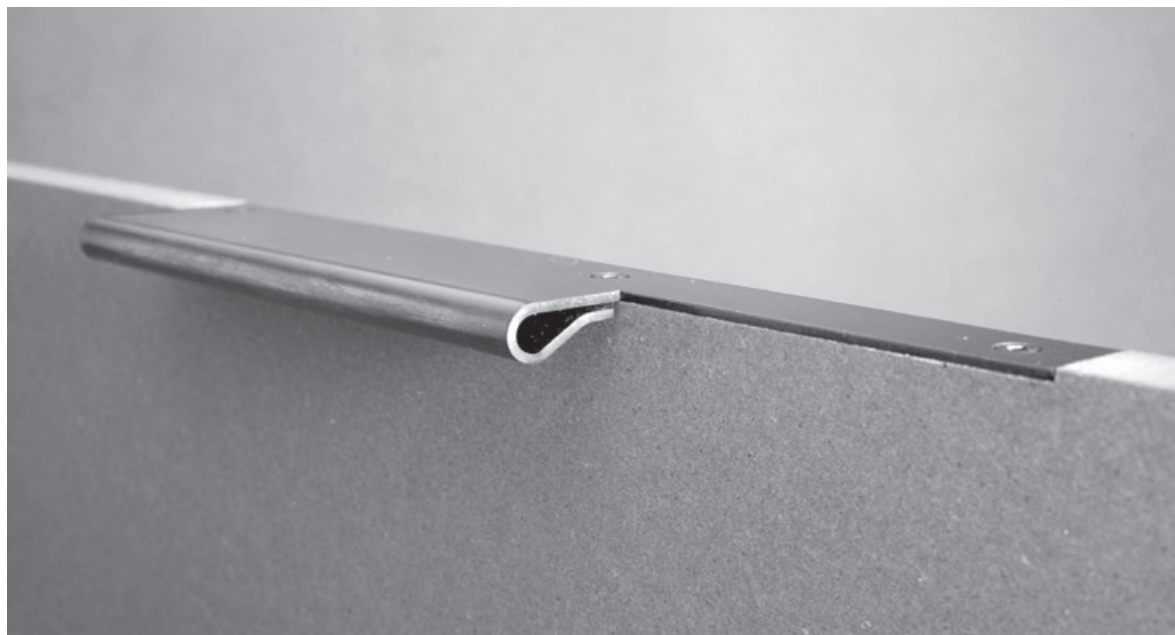
6.5", 9.5", AND 13.5" WIDTHS

AVAILABLE FINISHES:

BLACKENED STEEL

SATIN STAINLESS STEEL

OILED RUBBED BRONZE



EARLESS CABINET PULL

Brake formed cabinet pull
with hemmed grip.

SIZES:

2", 4", 6", AND 9" WIDTHS

AVAILABLE FINISHES:

BLACKENED STEEL

SATIN STAINLESS STEEL

OILED RUBBED BRONZE



FOLD CABINET PULL

Cabinet pull folded from a single piece of sheet metal, with hemmed grip.

SIZES:

4", 6", AND 9" WIDTHS

AVAILABLE FINISHES:

BLACKENED STEEL

SATIN STAINLESS STEEL

OILED RUBBED BRONZE



PEEL CABINET PULL

Bent cabinet pull.

SIZES:

1", 5", AND 9" HEIGHT

AVAILABLE FINISHES:

BLACKENED STEEL

SATIN STAINLESS STEEL

OILED RUBBED BRONZE

SATIN BLACK POWDER COATING

GLOSS RED POWDER COATING

GLOSS WHITE POWDER COATING



ESTY PULL

Tube handle with hardwood grip used as an appliance, door or cabinet solution.

SIZES:

27", 42", AND 60" HEIGHT
1" OD

AVAILABLE FINISHES:

BLACKENED STEEL
SATIN STAINLESS STEEL
OILED RUBBED BRONZE

WITH:

WALNUT GRIP
OAK GRIP



TK HOOKS



HALF PIPE HOOK

Single-sided sliced pipe hook.

SIZES:

1-1/2" L x 1-1/2" W x 2-3/8" H

AVAILABLE FINISHES:

BLACKENED STEEL

SATIN STAINLESS STEEL



HALF PIPE DOUBLE HOOK

Two-sided sliced pipe hook.

SIZES:

1-1/2" L x 4-1/2" W x 2-3/8" H

AVAILABLE FINISHES:

BLACKENED STEEL

SATIN STAINLESS STEEL



HOOK

Bent steel wall hook.

SIZES:

1", 5", 9" HEIGHTS X 1" W

AVAILABLE FINISHES:

BLACKENED STEEL

SATIN STAINLESS STEEL



NOTCH HOOK

Steel tube double wall hook, notched and bent at both ends.

SIZES:

2-1/2" L x 5" W x 1" H

AVAILABLE FINISHES:

BLACKENED STEEL

SATIN STAINLESS STEEL



SLIP HOOK

Tube bar with offset ring pinned to the front face.

SIZES:

2" W x 1" OD

AVAILABLE FINISHES:

BLACKENED STEEL

SATIN STAINLESS STEEL

SATIN BLACK POWDER COATING

GLOSS WHITE POWDER COATING

GLOSS RED POWDER COATING

OILED RUBBED BRONZE



SLIP DOUBLE HOOK

Tube bar with offset rings
pinned at both ends.

SIZES:

2-1/2" L x 5" W x 1" OD

AVAILABLE FINISHES:

BLACKENED STEEL

SATIN STAINLESS STEEL

SATIN BLACK POWDER COATING

GLOSS WHITE POWDER COATING

GLOSS RED POWDER COATING

OILED RUBBED BRONZE



ROD DOUBLE HOOK

Hot forged solid round bar, bent to form top and bottom hooks.

SIZES:

4" L x 1/2" W x 6-1/4" H

AVAILABLE FINISHES:

BLACKENED STEEL

SATIN STAINLESS STEEL

SATIN BLACK POWDER COAT

GLOSS RED POWDER COAT

GLOSS WHITE POWDER COAT

OILED RUBBED BRONZE



TUBE DOUBLE HOOK

Hot forged tube, flattened and bent to form top and bottom hooks.

SIZES:

4" L x 1/2" W x 5-1/8" H

AVAILABLE FINISHES:

BLACKENED STEEL

SATIN STAINLESS STEEL

OILED RUBBED BRONZE





TK BATH

SLIP TOWEL BAR

Steel tube bar with offset rings pinned at both ends.

SIZES:

18", 24" AND 32"

AVAILABLE FINISHES:

BLACKENED STEEL

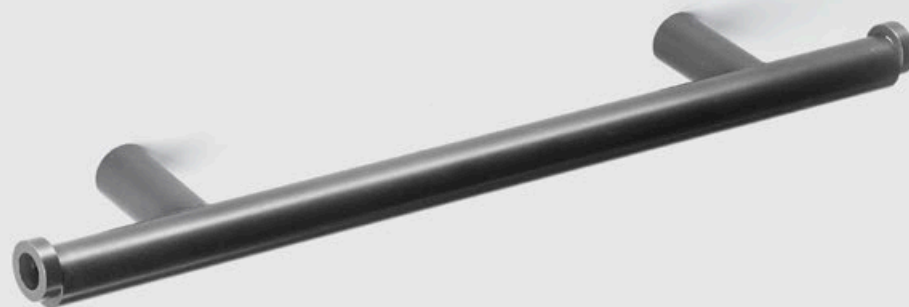
SATIN STAINLESS STEEL

SATIN BLACK POWDER COATING

GLOSS WHITE POWDER COATING

GLOSS RED POWDER COATING

OILED RUBBED BRONZE



SLIP HOOK

Solid round bar with offset ring pinned to the front face.

SIZES:

2" D x 1" OD

AVAILABLE FINISHES:

*BLACKENED STEEL WITH
LACQUERED FINISH*

*SATIN STAINLESS STEEL WITH
LACQUERED FINISH*

SATIN BLACK POWDER COATING

GLOSS WHITE POWDER COATING

GLOSS RED POWDER COATING

*OILED RUBBED BRONZE WITH
LACQUERED FINISH*



SLIP DOUBLE HOOK

Tube with offset rings
pinned at both ends.

SIZES:

2-1/2" D x 5" W x 1" OD

AVAILABLE FINISHES:

BLACKENED STEEL WITH
LACQUERED FINISH

SATIN STAINLESS STEEL WITH
LACQUERED FINISH

SATIN BLACK POWDER COATING

GLOSS WHITE POWDER COATING

GLOSS RED POWDER COATING

OILED RUBBED BRONZE WITH
LACQUERED FINISH



SLIP TP BAR

Welded 1" diameter tube, with an offset ring pinned to one end, keeping the TP roll in place.

SIZES:

5-3/8" W x 3-5/8" D

AVAILABLE FINISHES:

BLACKENED STEEL

SATIN STAINLESS STEEL

SATIN BLACK POWDER COATING

GLOSS WHITE POWDER COATING

GLOSS RED POWDER COATING

OILED RUBBED BRONZE



TK FIRE



SHOVEL

For fire place ashes, with steel pipe and brake formed pan; includes peg for wall mounting.

SIZES:

ONE SIZE

AVAILABLE FINISHES:

BLACKENED STEEL

SATIN STAINLESS STEEL



POKER

Solid round bar fireplace poker with steel pipe handle; includes steel peg for wall mounting.

SIZES:

ONE SIZE

AVAILABLE FINISHES:

BLACKENED STEEL

SATIN STAINLESS STEEL



BROOM

Fireplace broom with steel pipe handle;
includes steel peg for wall mounting.

SIZES:

ONE SIZE

AVAILABLE FINISHES:

BLACKENED STEEL

SATIN STAINLESS STEEL



SHOVEL POKER + BROOM

Steel fireplace shovel, poker, and broom on a custom welded stand.

SIZES:

ONE SIZE, 32" H x 9-3/4"W x 5-1/2" D

AVAILABLE FINISHES:

BLACKENED STEEL

SATIN STAINLESS STEEL



ANDIRONS

Fireplace andirons, with welded 3/4" steel tube grate and 2" diameter steel tube legs.

SIZES:

33" W X 18-3/4" D X 17" H

AVAILABLE FINISHES:

BLACKENED STEEL





TK FURNISHINGS

COFFEE TABLE

A collection of steel tables and shelves, each with 180-degree hemmed edges, formed from heavy gauge hot-rolled plate on a 550 ton hydraulic press brake.

Tool marks serve as evidence of the fabrication process, and variations in surface texture and color are part of the intrinsic nature of the industrial materials.

SIZES:

62"W X 33"D X 14"H

AVAILABLE FINISHES:

BLACKENED STEEL



SMALL COFFEE TABLE

A collection of steel tables and shelves, each with 180-degree hemmed edges, formed from heavy gauge hot-rolled plate on a 550 ton hydraulic press brake.

Tool marks serve as evidence of the fabrication process, and variations in surface texture and color are part of the intrinsic nature of the industrial materials.

SIZES:

47"W X 23"D X 16"H

AVAILABLE FINISHES:

BLACKENED STEEL



CONSOLE TABLE

A collection of steel tables and shelves, each with 180-degree hemmed edges, formed from heavy gauge hot-rolled plate on a 550 ton hydraulic press brake.

Tool marks serve as evidence of the fabrication process, and variations in surface texture and color are part of the intrinsic nature of the industrial materials.

SIZES:

108"W X 18"D X 27-3/4"H

AVAILABLE FINISHES:

BLACKENED STEEL



MEETING TABLE

A collection of steel tables and shelves, each with 180-degree hemmed edges, formed from heavy gauge hot-rolled plate on a 550 ton hydraulic press brake.

Tool marks serve as evidence of the fabrication process, and variations in surface texture and color are part of the intrinsic nature of the industrial materials.

SIZES:

3/8" PLATE, 144"W X 48"D X 30"H

AVAILABLE FINISHES:

BLACKENED STEEL



LOW SHELVES

A collection of steel tables and shelves, each with 180-degree hemmed edges, formed from heavy gauge hot-rolled plate on a 550 ton hydraulic press brake.

Tool marks serve as evidence of the fabrication process, and variations in surface texture and color are part of the intrinsic nature of the industrial materials.

SIZES:

54"W X 16-1/4"D X 24-1/4"H

AVAILABLE FINISHES:

BLACKENED STEEL



SIDE TABLE

A collection of steel tables and shelves, each with 180-degree hemmed edges, formed from heavy gauge hot-rolled plate on a 550 ton hydraulic press brake.

Tool marks serve as evidence of the fabrication process, and variations in surface texture and color are part of the intrinsic nature of the industrial materials.

SIZES:

22"W X 20"D X 20"H

AVAILABLE FINISHES:

BLACKENED STEEL



BLACK DESK

Brake formed 3/8" steel writing desk, 62"W x 30"D x 30"H, with a blackened finish sealed with wax. The writing surface has a teardrop hemmed front edge, and is wrapped with 1/8" belting leather. The drawer is solid walnut, with undermount slides and a hemmed steel face. The desk can be ordered with the drawer on either the left or right hand side.

Tool marks serve as evidence of the fabrication process, and variations in surface texture and color are part of the intrinsic nature of the industrial materials.

SIZES:

ONE SIZE

AVAILABLE FINISHES:

BLACKENED STEEL



JACK BOX

Hot-rolled 3/16" steel cabinet, 8 ft. wide, with an interior shelf and brake formed steel doors bent at 90 degrees. Handles and hinges machined from solid cold-rolled steel bar, with bronze hinge pins and bearings. Available in wall-mounted and floor-standing models.

Tool marks serve as evidence of the fabrication process, and variations in surface texture and color are part of the intrinsic nature of the industrial materials.

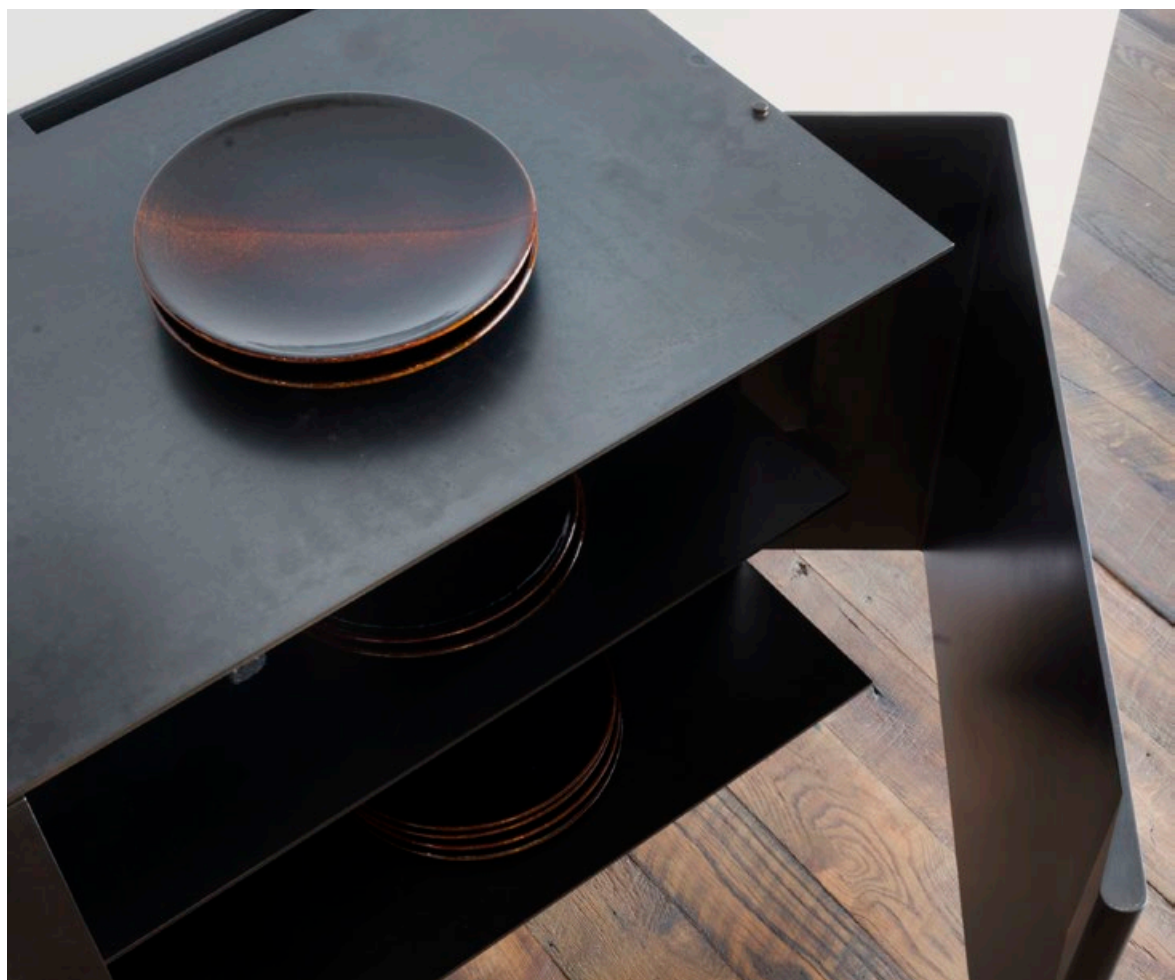
SIZES:

JACK BOX WALL: 96"W X 18"D X 18"H

JACK BOX FLOOR: 96"W X 18"D X 32"H

AVAILABLE FINISHES:

BLACKENED STEEL



ROLL TABLE

Steel and wood rolling dining table with 2-3/4" thick solid walnut top. Two pairs of 5-5/8" diameter steel tube wheels turn on 1-1/4" diameter cold rolled axles with bronze bearings. Optional non-marring black rubber treads are 1/4" seamless cast urethane, 9" wide each.

Tool marks serve as evidence of the fabrication process, and variations in surface texture and color are part of the intrinsic nature of the industrial materials.

SIZES:

60"W x 40"D x 29"H

AVAILABLE FINISHES:

BLACKENED STEEL



DISC BENCH

Steel and wood rolling bench with 2-3/4" thick solid walnut top. Four pairs of 9" diameter x 1-1/4" thick solid steel discs turn on cold rolled axles with bronze bearings. Optional non-marring black rubber treads are 1/4" seamless cast urethane, 1-1/4" wide each.

Tool marks serve as evidence of the fabrication process, and variations in surface texture and color are part of the intrinsic nature of the industrial materials.

SIZES:

96"W x 16"D x 17"H

AVAILABLE FINISHES:

BLACKENED STEEL + WALNUT



TRAY

Plate tray, 5" wide, with folded handles at both ends.

Tool marks serve as evidence of the fabrication process, and variations in surface texture and color are part of the intrinsic nature of the industrial materials.

SIZES:

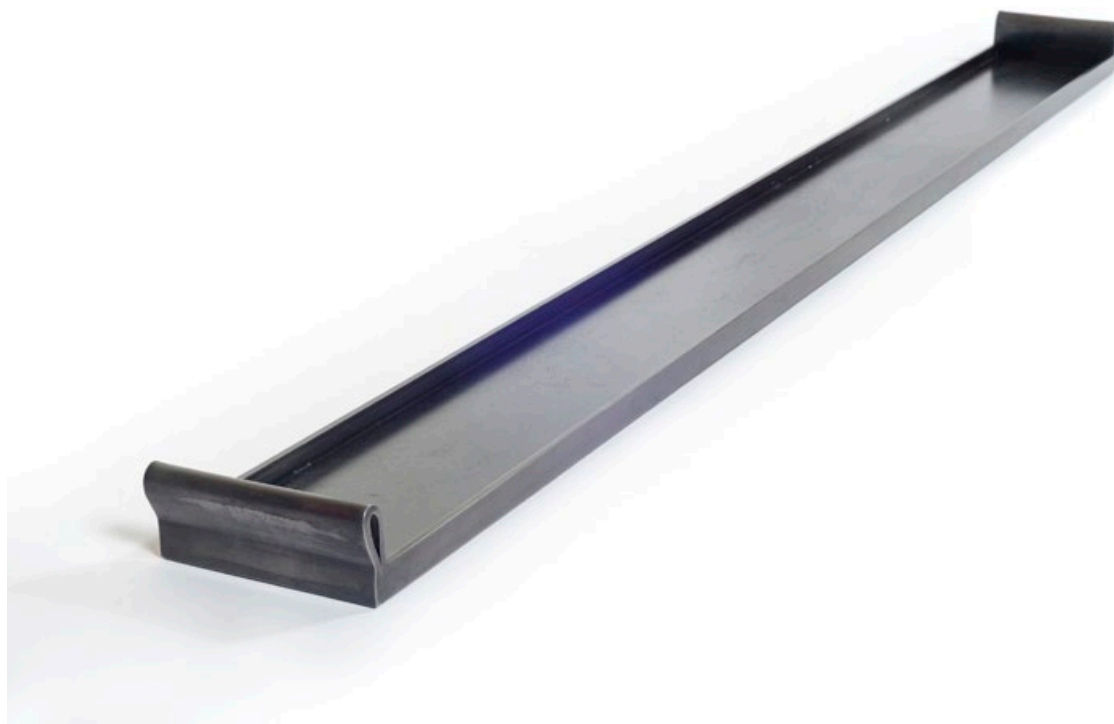
24", 42" AND 54" LENGTHS

AVAILABLE FINISHES:

BLACKENED STEEL

SATIN STAINLESS STEEL

OILED RUBBED BRONZE



ROO

Hand-stitched leather pouch. Designed to mount on the Black Table series using concealed magnets.

Natural finish, will darken. Tool marks serve as evidence of the fabrication process, and variations in surface texture and color are part of the intrinsic nature of the industrial materials.

SIZES:

10" W x 9" D

AVAILABLE IN CUSTOM SIZES

AVAILABLE FINISHES:

NATURAL LEATHER





TK LIGHTING

PERF PENDANT

Perforated steel tube light pendant.

Matching ceiling canopy and bulb included.

SIZES:

2-3/8" OD x 25" H

AVAILABLE FINISHES:

BLACKENED STEEL



PERF PULLEY PENDANT

Adjustable height perforated steel tube light pendant, with lead-filled steel counterweight and pulley system.

SIZES:

2-3/8" OD x 25" H

AVAILABLE FINISHES:

BLACKENED STEEL



PIPE PENDANT

Steel tube light pendant.

Matching ceiling canopy and bulb included.

SIZES:

2-3/8" OD x 25" H

AVAILABLE FINISHES:

BLACKENED STEEL



PIPE PULLEY PENDANT

Adjustable height steel tube light pendant, with lead-filled steel counterweight and pulley system.

SIZES:

2-3/8" OD x 25" H

AVAILABLE FINISHES:

BLACKENED STEEL





TK WHEELS

ROLL

Make your custom table or cabinet movable! Each set of casters is made with a pair of steel tube wheels, with cold rolled axles, solid aluminum hubs, and self-lubricating bronze bearings.

SIZES:

2-3/8" OD AND 5-5/8" OD

AVAILABLE FINISHES:

BLACKENED STEEL

BLACKENED STEEL WITH RUBBER TREAD



DISC

Put your tabletop or cabinet on wheels!
Each set of casters is made with a pair
of machined steel plate discs, with
self-lubricating bronze bearings and
custom hub caps.

SIZES:

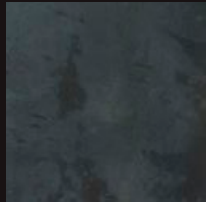
1/2" W X 5" OD AND 1-1/4" W X 9" OD

AVAILABLE FINISHES:

BLACKENED STEEL



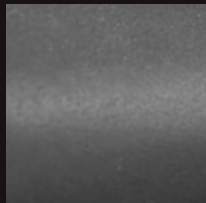
FINISHES



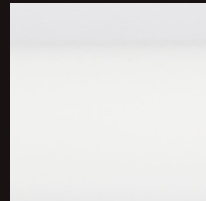
BLACKENED STEEL



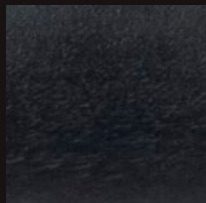
GLOSS RED POWDER COATING



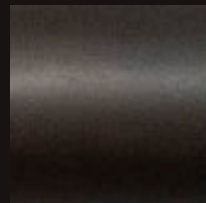
SATIN STAINLESS STEEL



GLOSS WHITE POWDER COATING



SATIN BLACK POWDER COATING



OIL RUBBED BRONZE

Tool marks serve as evidence of the fabrication process, and variations in surface texture and color are part of the intrinsic nature of the industrial materials.

FOR MORE INFORMATION AND ORDER INQUIRIES,
CONTACT **TKCOLLECTION@ARGENTFAB.COM**

Olson Kundig